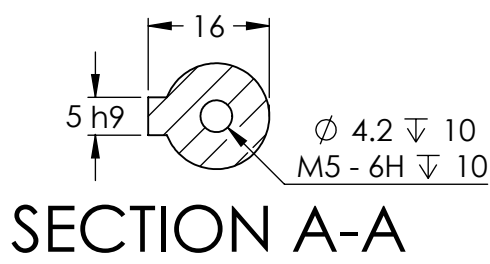


REVISIONS				
ZONE	REV.	DESCRIPTION	DATE	APPROVED
	1	CUSTOMER INFORMATIONAL	3/23/2017	RA

4x Ø 4.5 THRU EQS

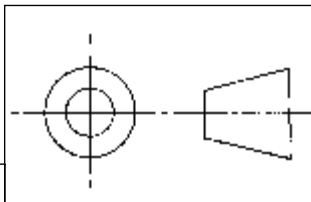
HPM60-03-200-01 Specifications

Parameter	Unit	Value
Rated Power	W	600
Rated Voltage	V _(AC)	220
Continuous Stall Torque	Nm	1.91
Max Torque	Nm	5.73
Rated Speed/Max Speed	rpm	3000/3600
Rated Current	A _(peak)	2.6
Max Current	A _(peak)	7.8
Ke : Back EMF Constant	V _(peak) /krpm	77.8
Kt : Torque Constant	Nm/A _(peak)	0.405
Moment of Inertia	x10 ⁻⁴ kgm ²	0.4
Number of Poles	#	8
Mass	kg	1.58

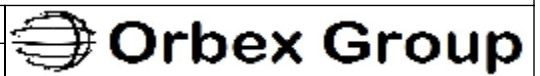


Motor Plug (AMP 172167-1)
Mates with AMP 172159-1
Plug Serial Number 1 2 3 4
Winding Lead Wire U V W PE

Encoder Plug (AMP 172171-1) Mates with AMP 172163-1
Plug Serial Number 2 3 4 5 6 7 8 9 10 11 12 13 14 15 1
Encoder Signal 5V 0V B+ Z- U+ Z+ U- A+ V+ W+ V- A- B- W- PE



UNLESS OTHERWISE SPECIFIED:		
DRAWING SYMBOLS & TOLERANCES PER ANSI Y14.5		
DIMENSIONS ARE METRIC		
TOLERANCES:		
DECIMALS	LINEAR	ANGULAR
.X	±0.2	±0.5DEG
.XX	±0.02	±0.2DEG
.XXX	±0.005	±0.01DEG



TITLE: **SERVO MOTOR**

Feedback Element	Optical Encoder (2500 line)
Operating Environment	Temperature: 0-40°C; Humidity <95%RH (Free from condensing)
Storage Environment	Temperature: -20-65°C; Humidity <95%RH (Free from condensing)
Insulation	Class F (155°C Winding Temperature)
Protection Class	IP65
Duty Cycle	Continuous

THIS DRAWING CONTAINS PROPRIETARY INFORMATION OF THE ORBEX GROUP AND MAY NOT BE IN WHOLE OR IN PART DUPLICATED OR DISCLOSED OR USED FOR MANUFACTURE OF ANY PART DISCLOSED HEREIN WITHOUT WRITTEN PERMISSION OF THE ORBEX GROUP.

CONFIDENTIAL

INTERPRET GEOMETRIC TOLERANCING PER: ANSI Y14.5
MATERIAL
FINISH
CLEAN
DRAWN Sun KPO 23-03-2017

SIZE B	PRT. NO. HPM60-03-200-01	REV 1
SCALE: 1:1	SHEET 1 OF 1	