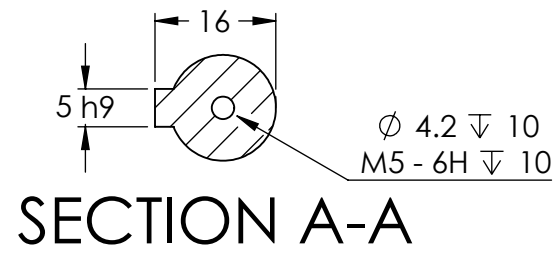


REVISIONS				
ZONE	REV.	DESCRIPTION	DATE	APPROVED
	1	CUSTOMER INFORMATIONAL	05/03/2017	RA

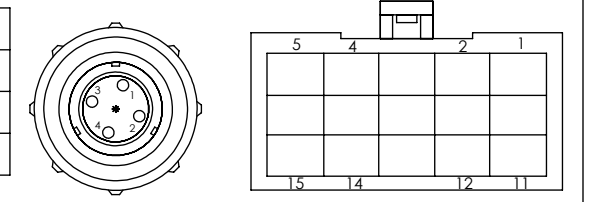
HPM60-02-60-01 Specifications

Parameter	Unit	Value
Rated Power	W	400
Rated Voltage	V _(DC)	60
Continuous Stall Torque	Nm	1.27
Max Torque	Nm	3.81
Rated Speed/Max Speed	rpm	3000/4000
Rated Current	A _(peak)	10
Max Current	A _(peak)	30
Ke : Back EMF Constant	V _(peak) /krpm	13.01
Kt : Torque Constant	Nm/A _(peak)	0.124
Moment of Inertia	x10 ⁻⁴ kgm ²	0.28
Number of Poles	#	8
Mass	kg	1.45

Feedback Element	Optical Encoder (2500 line)
Operating Environment	Temperature: 0-40°C; Humidity <95%RH (Free from condensing)
Storage Environment	Temperature: -20-65°C; Humidity <95%RH (Free from condensing)
Insulation	Class F (155°C Winding Temperature)
Protection Class	IP65
Duty Cycle	Continuous



Motor Plug (Weipu SP2110/P)				
Mating Connector SP2111/S4II				
Plug Serial Number	1	2	3	4
Winding Lead Wire	U	V	W	PE



Encoder Plug (AMP 172171-1) Mates with AMP 172163-1															
Plug Serial Number	2	3	4	5	6	7	8	9	10	11	12	13	14	15	1
Encoder Signal	5V	0V	B+	Z-	U+	Z+	U-	A+	V+	W+	V-	A-	B-	W-	PE

THIS DRAWING CONTAINS PROPRIETARY INFORMATION OF THE ORBEX GROUP AND MAY NOT BE IN WHOLE OR IN PART DUPLICATED OR DISCLOSED OR USED FOR MANUFACTURE OF ANY PART DISCLOSED HEREIN WITHOUT WRITTEN PERMISSION OF THE ORBEX GROUP.

CONFIDENTIAL

UNLESS OTHERWISE SPECIFIED:
DRAWING SYMBOLS & TOLERANCES PER ANSI Y14.5
DIMENSIONS ARE METRIC
TOLERANCES:
DECIMALS LINEAR ANGULAR
.X ±0.2 ±0.5DEG
.XX ±0.02 ±0.2DEG
.XXX ±0.005 ±0.01DEG

INTERPRET GEOMETRIC TOLERANCING PER: ANSI Y14.5

MATERIAL

FINISH CLEAN

DRAWN Sun KPO 05/03/2017

Orbex Group

TITLE: **SERVO MOTOR**

SIZE B	PRT. NO. HPM60-02-60-01	REV 1
---------------	--------------------------------	--------------

SCALE: 1:1 SHEET 1 OF 1